



GUANGZHOU EC-PACK PACKAGING EQUIPMENT CO., LTD.

Address: 16 Huang Qi Shan Road, Yong He Economic Zone, GETDD, 511356,
Guangzhou, Guangdong Province, China.

Tel: +86 20 8220 9518 Fax: +86 20 8220 9511

Web: www.ec-jet.com E-mail: market@ec-jet.com

PHARMAPACK TECHNOLOGIES CORPORATION

Address: 16 Huang Qi Shan Road, Yong He Economic Zone, GETDD, 511356, Guangzhou, Guangdong Province, China.

Tel: +86 20 8221 5907 Fax: +86 20 8221 3367

Web: www.pppharmapack.cn

E-mail: market@pppharmapack.com

Europe: Pharmapack Europe S.R.L.

Address: Via Molino Rosso 10F, 40026 Imola (BO), Italy

Tel: +39 054 218 903 15 Fax: +39 054 218 903 14

Web: www.pppharmapack.com

E-mail: market@pppharmapack.com

U.S.A: Pharmapack North America Corporation

Address: 1850 S Carlos Ave, Bldg15, Unite 2, Ontario, CA 91761, USA

Tel: +1 909 390 1888 Fax: +1 909 390 5388

Web: www.pppharmapack.com

E-mail: sales@pharmapack-USNA.com

India: Pharmapack Technologies (India) Private Limited

Address: No.206 Srinivasa Towers, Beside ITC Kakatiya Hotel, Begumpet, Hyderabad, India

Tel: +91 406 678 9888

Web: www.pppharmapack.com

E-mail: market@pppharmapack.com

PRODUCT CATALOG

CODING AND MARKING SOLUTIONS



EC-JET
official website



Code scanning
VR experience



Sales wechat

Note:

EC-JET 易码 易达 易达 EC-JET EC-PACK MBEAM 美 MBEAM
FAMOE 锋

all the trademarks are owned by GUANGZHOU EC-PACK PACKAGING EQUIPMENT CO.,LTD.



CONTENTS

01 PAGE

Company profile

03 PAGE

History

05 PAGE

Awards and certifications

06 PAGE

Continuous inkjet printer

19 PAGE

Laser coding systems

29 PAGE

High resolution inkjet printer

39 PAGE

Large character inkjet printer

41 PAGE

Inkjet printer consumables

42 PAGE

Integrator equipment

43 PAGE

Cooperative partner

45 PAGE

Application



20+

Specialising in the
coding and marking
automation industry

50+

Obtained more than
50 patents in total

100+

Establish strategic
partnership with more
than 100 countries and
regions

COMPANY PROFILE

GUANGZHOU EC-PACK PACKAGING EQUIPMENT CO.,LTD.(brand name:EC-JET), established in 2006, is a wholly-owned subsidiary of PHARMAPACK TECHNOLOGIES CORPORATION and owns many brands such as EC-JET and FOMONE. As one of the leading enterprises in the domestic marking industry, EC-JET, as the first drafter, led the formulation of the national standard of "Continuous Inkjet Printer" (GB/T29017-2012) and participated in the formulation of the "Coding system of two dimensional code for product traceability" (T/GDFPMA 04-2021) group standard. At the same time, it has obtained ISO9001, ISO14001, ISO45001 and other system certifications.

EC-JET products include continuous inkjet printers, large character inkjet printers, laser coding systems, high resolution inkjet printers, integrator equipment and consumables. The company has industry-leading independent core technologies and sustainable R&D capabilities, and is committed to providing professional solutions for various industries and creating greater value for the sustainable development of customers.

EC-JET, Headquartered in Guangzhou, has established a cooperative marketing system and service network in lots of cities in China and more than 100 countries and regions overseas; Each service station is equipped with professionals to provide users with high-quality and efficient comprehensive services.



Vision

To be a leader in
the global coding and
marking industry

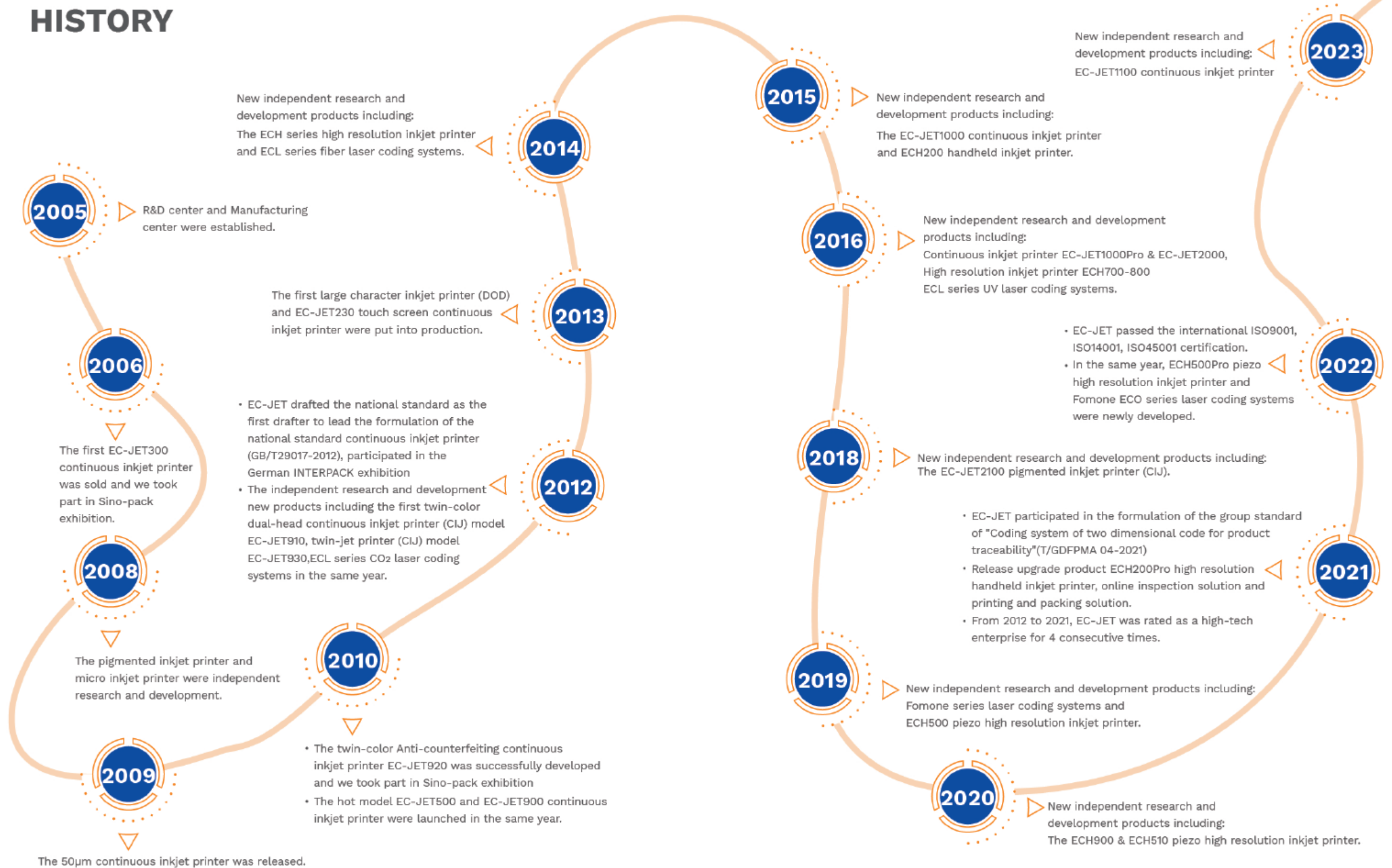
Mission

Enabling intelligent
manufacturing, improving
production efficiency, and
escorting a better life

Values

- Keep developing and Be enterprising
- Realistic and Innovative
- Scientific and Management
- Keep improving and Refine on

HISTORY



AWARDS AND CERTIFICATIONS



CONTINUOUS INKJET PRINTER

EC-JET920
Twin Color Anti-counterfeiting Continuous Inkjet Printer

EC-JET910
Dual-Head Continuous Inkjet Printer



EC-JET930
Twin Jet Continuous Inkjet Printer

EC-JET2000/2100
Continuous Inkjet Printer

EC-JET1100
Continuous Inkjet Printer



EC-JET CIJ SPEED CHART

Model	EC-JET2000 Continuous Inkjet Printer			EC-JET2100 Continuous Inkjet Printer	EC-JET1100 Continuous Inkjet Printer
Nozzle	40μm	50μm/60μm	70μm	70μm	50μm/60μm
Print Speed(m/min)					
GenStd 7	144.0	128.0	144.0	144.0	120.0
GenStd 9	108.0	96.0	108.0	108.0	91.0
GenStd 12	53.0	47.0	53.0	53.0	46.0
GenStd 16	40.0	36.0	41.0	41.0	36.0
GenStd 24	23.0	20.0	23.0	23.0	20.0
GenStd 25	/	20.0	22.0	22.0	19.0
GenStd 32	15.0	14.0	15.0	15.0	14.0
GenStd 34	14.0	13.0	14.0	14.0	13.0
HighSpeed 5	360.0	320.0	360.0	360.0	274.0
HighSpeed 7	270.0	240.0	270.0	270.0	213.0
HighSpeed 9	216.0	192.0	216.0	216.0	175.0
HighSpeed 12	144.0	128.0	144.0	144.0	120.0
HighSpeed 16	94.0	84.0	94.0	94.0	80.0
HighSpeed 24	30.0	27.0	30.0	31.0	37.0
Stitch 14	90.0	80.0	90.0	90.0	/
Stitch 21	64.0	57.0	64.0	64.0	/
Stitch 28	30.0	26.0	30.0	30.0	/
HighQuality 24	/	/	19.0	/	17.0

Remark: Please contact with Guangzhou EC-PACK packaging equipment Co.,Ltd for the latest technology parameters.

EC-JET920

Twin-Color Anti-counterfeiting Continuous Inkjet Printer

- 

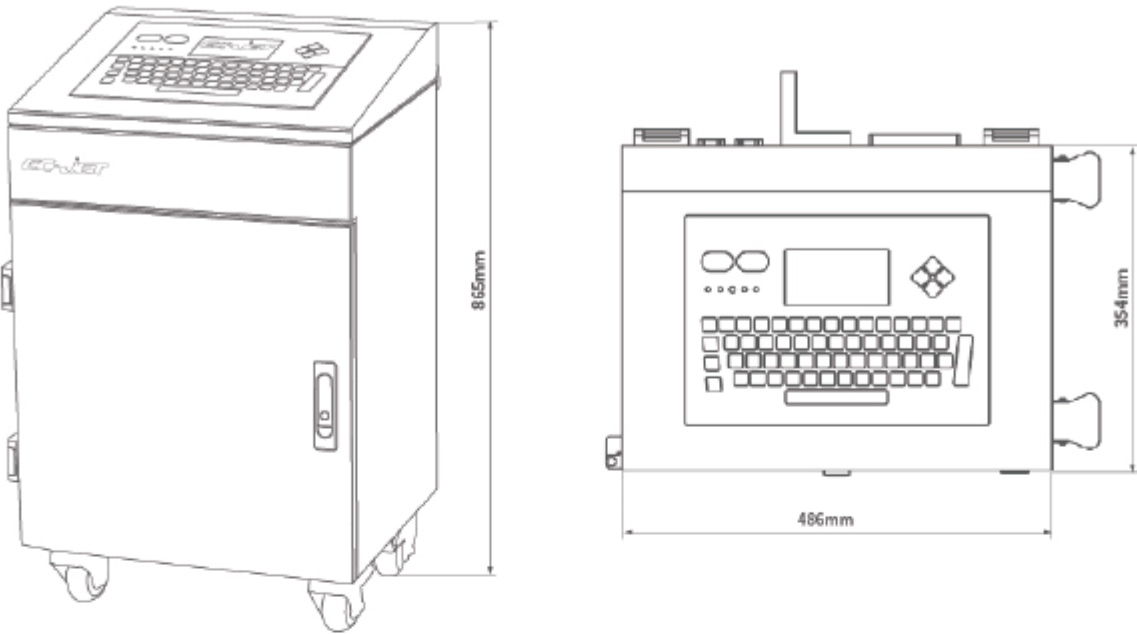
Stable Performance
- 

Twin-color Printing
- 

Anti-counterfeiting and Anti-smuggling



- 01 Support twin-color printing (except white pigmented ink)
- 02 Support a variety of combinations of twin-color anti-counterfeiting printing, can identify counterfeit goods through verification procedures.



Model	EC-JET920
Print Head Type	60μm
Message Height	34 Dots(Max)
Max Message Length	1055 Characters
Max Printing Characters	2000 Characters Per Second
Print Line	1-4 Lines
Max Print Speed	6m/s (1 Line)
Print Head Dimension	60mmx 60mmx170mm(L x W x H)
Cabinet Dimension	486mmx354mmx865mm(L x W x H)
Weight	About 40kg
Appearance	Industrial-grade Stainless Steel Cabinet
Working Temperature	5°C~45°C
Relative Humidity	Max 90% (No Condensation)
Protection Grade	IP55
Power Supply	AC115V/230V, 50/60Hz

EC-JET910

Dual-Head Continuous Inkjet Printer



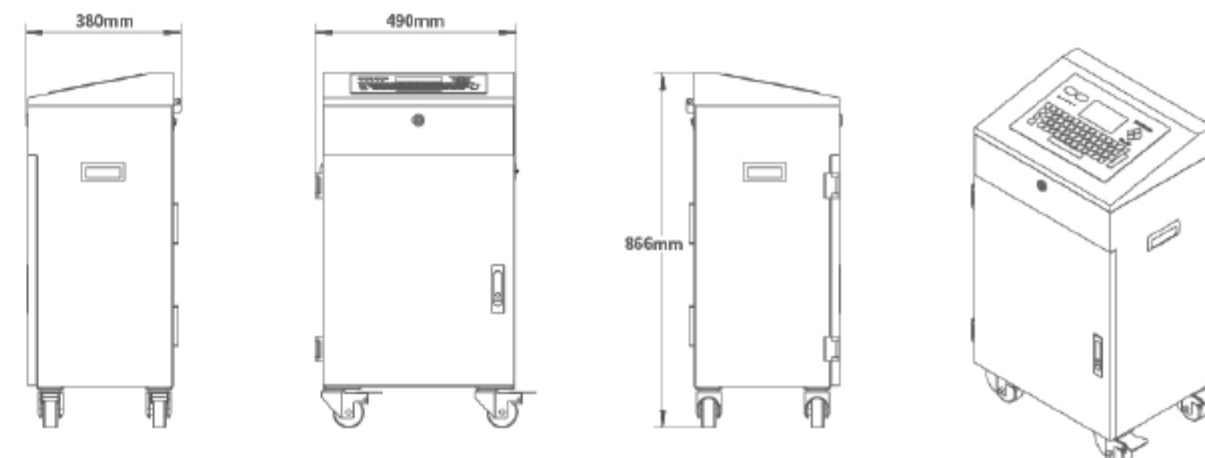
Safe &
Reliable



Stable
Performance



Fast
Editing



01 Dual printhead design: Inkjet coder is equipped with 2 print heads, meanwhile owning 2 sets of ink path system.

02 Independent operation capacity: Each printhead can operate independently, does not rely on the other printhead. Each printhead can select different ink supplies according to the actual needs.

03 Combined operation capacity: When the higher printing speed or more complicated printing content is required, dual print heads can combine together and jointly complete printing tasks.



Model	EC-JET910
Print Head Type	40μm、50μm、60μm、70μm
Optional Ink Type	non-pigment ink
Character	90°、180°、270°revolve available
Min. Print height	0.9mm/ Print Head
Max. Print height	15mm/ Print Head
Max.Printing character per second	Up to 2857 characters
Print height	34 dot per nozzle (up to 68 dot in total)
Print line	1 to 4 line /print head
Max Message Length	1055 Characters(7x5 dots matrix)
Languages	Chinese,English, Italian, Persian,Korean,Vietnamese,Polish (update more languages as needed)
Print Head Dimension	φ42mm x 188mm
Weight	About 40kg
Interface	Shaft Encoder,Photocell,External Alarm,USB, Ethernet, RS-232 Communication
USB Data Transumission	Support Software upgrade, Data backup, import and export with U disk
Material	SUS304 stainless steel cabinet
Working Temperature	5°C~45°C
Relative Humidity	Max 90%(No Condensation)
Power Supply	AC115V/230V, 50/60Hz

EC-JET930

Twin Jet Continuous Inkjet Printer



Safe & Reliable



Stable Performance



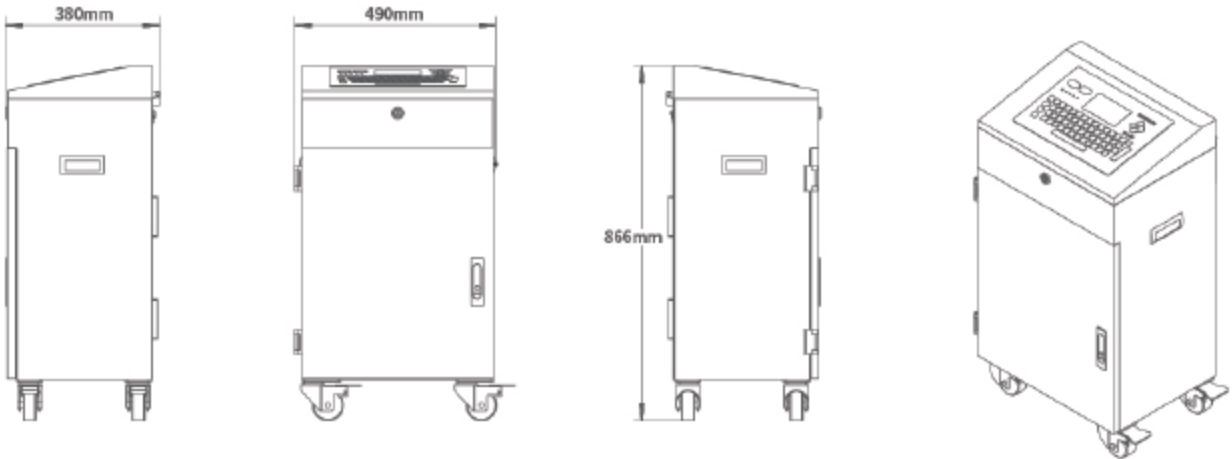
Fast Editing



01 Dual nozzle design: inkjet coder is equipped with 2 nozzles, meanwhile owning 2 sets of ink path system.

02 The machine is able to choose single system printing or dual system printing according to the requirement.

03 Each nozzle can select different types of ink supplies according to the actual needs.



Model	EC-JET930
Print Head Type	50μm、60μm、70μm
Optional Ink Type	non-pigment ink
Character	90 °、180 °、270 ° revolve available
Print height	34 dot per nozzle (up to 68 dot in total)
Min. Print height	0.9mm/ Print Head
Max. Print height	15mm/ Print Head
Print line	1 to 8 line /print head
Max Message Length	1055 Characters(7x5 dots matrix)
Max.Printing character per second	Up to 2857 characters
Languages	Chinese,English, Italian, Persian,Korean,Vietnamese, Polish(update more languages as needed)
USB Data Transumission	Support Software upgrade, Data backup, import and export with U disk
Material	SUS304 stainless steel cabinet
Interface	Shaft Encoder,Photocell,External Alarm,USB, Ethernet, RS-232 Communication
Working Temperature	5°C~45°C
Relative Humidity	Max 90%(No Condensation)
Weight	About 40kg
Power Supply	AC115V/230V, 50/60Hz

EC-JET2000/2100

Continuous Inkjet Printer



Safe &
Reliable



Touchable
Screen



Fast
Editing



1. Modular Print head
2. flexible and stable

Separate ink system with electronic system

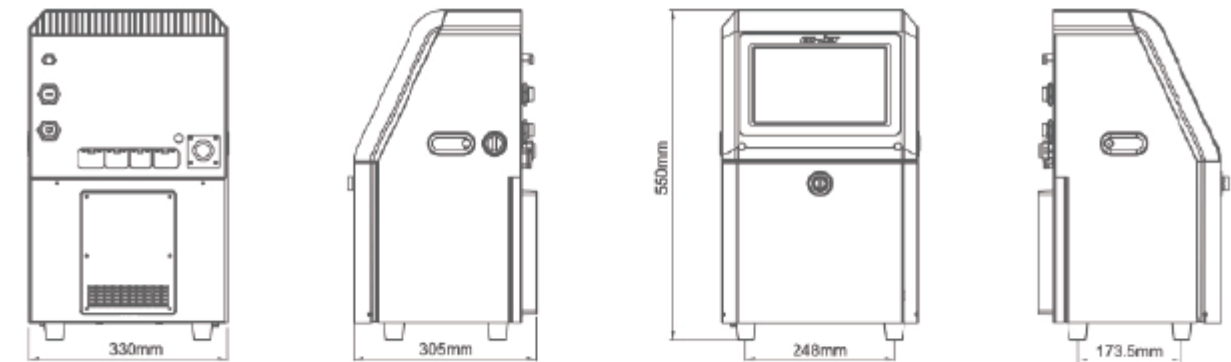
- Separate ink system with electronic system, making maintenance easier and safer.
- Reduce the consumption of consumables and save costs.
- Quick maintenance mode, Easy maintenance

Automate Cleaning

- New automatic cleaning ink system, normal operation not be affected after long-term shutdown.
- Automate cleaning on nozzle surface unique patented design of nozzle for automatic cleaning^{*1}

More features and functions

- Unexpected power failure, ink line automatically stop.
- Insert Variable: Fixed Text, Serial Number, Date, Time, Counter, Shift Code, Database, Random Code, 1D Bar Code, 2D Bar Code, Logo



Model	EC-JET2000	EC-JET2100
Print Head Type	60μm , 40μm , 50μm , 70μm (Optional)	70μm (Pigment ink printer)
Optional Ink Type	Dye Ink (Multiple inks and colors)	Pigment ink (White, Yellow etc.)
Max Print Speed(1 Line)	360m/min(Dot pitch 0.4mm)	360m/min(Dot pitch 0.4mm)
Character	90°、180°、270° revolve available	
Message Capacity	Maximum 4 GB	
Print Message Height	1.0~20mm	
Maximum Print Dots In A Row	34dots	
Printing Lines	1 -5 lines	
Max Message Length	2048 Characters (7x5 dots matrix)	
Languages	Chinese, Traditional Chinese, English, Italian, German, Portuguese, Persian, Vietnamese, Polish, Russian, Arabic(update more languages as needed)	
High Precision Screen	10.1 True Color HD Touch Screen	
Operation System	EC-JET "SEQ" Operation System	
Interface	Shaft Encoder, Photocell, External Alarm, USB, Ethernet, RS-232 Communication	
USB Data Transmission	Support software upgrade, data backup, import and export with U disk	
Remote Control	LAN remote control operation	
Material	Engineering plastics + SUS304 stainless steel cabinet	
Working Temperature	5°C~45°C	
Relative Humidity	Max 90% (No Condensation)	
Protection Grade	IP55	
Power Supply	AC115V/230V, 50/60Hz	

EC-JET1100

Continuous Inkjet Printer



Fast Editing



Touchable Screen



Wide Application

8 Inch Color Touch Screen



Reliable Quality,
Function Upgrade

High quality printhead

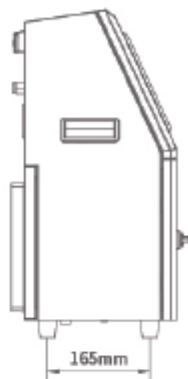
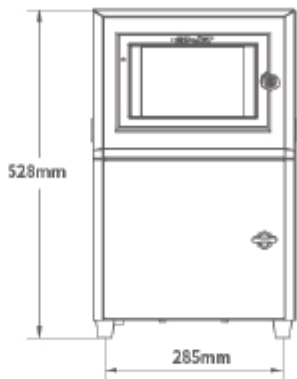
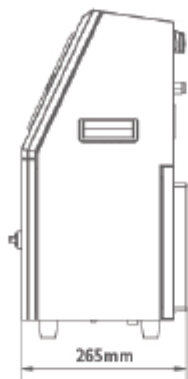
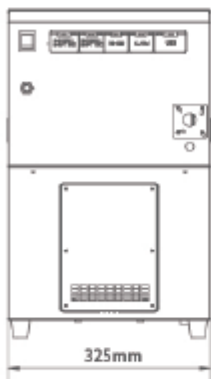
- Sealed design eases of cleaning and reduces print head failure.
- Durable ruby nozzle has long lifetime.
- Unique advanced VOD control system of real-time ink viscosity makes printing much clearer and more stable.

Intelligent cleaning

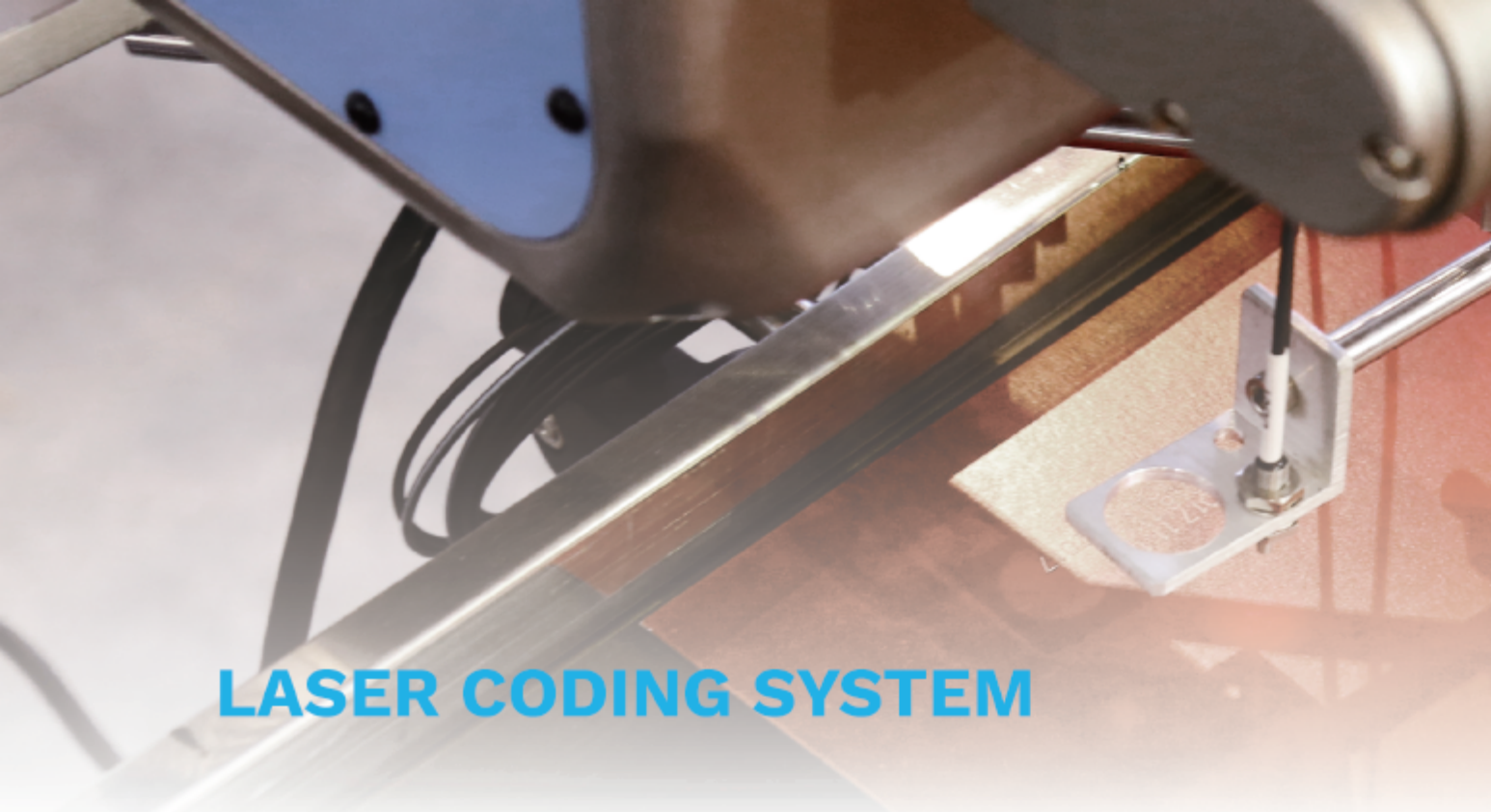
- The inkjet printer can select corresponding automatic cleaning programs according to different downtime when it is stopped, wash out the inside of valve, ink supply path and nozzles to ensure the next startup is much smoother.

Friendly interface

- 8-inch industrial touch screen, integrated display, touch and control as a multi-functional component, has the features of sensitive response speed, convenience and intuition, clear image, durability and space saving.



Model	EC-JET1100
Print Head Type	60µm , 50µm
Max Print Speed(1 line)	Up to 240m/min (Ideal dot pitch 0.4mm)
Print Height	Max 5 lines of print, up to 32 dots/20mm
Max Printing Characters	2000 Characters Per Second
Languages	Chinese,Traditional Chinese,English,Italian,German,Portuguese, Persian,Vietnamese,Polish,Russian,Turkish, Arabic, Bengali (update more languages as needed)
Print Head Dimension	Φ42mmx188mm
Print Head Conduit Length	2m or 3m
Cabinet Dimension	325mmx265mmx528mm(L x W x H)
Weight	About 18kg
Material	Industrial-grade Stainless Steel Cabinet
Working Temperature	5°C~45°C
Relative Humidity	Max 90% (No Condensation)
Protection Grade	IP55
Power Supply	AC115V/230V, 50/60Hz



LASER CODING SYSTEM

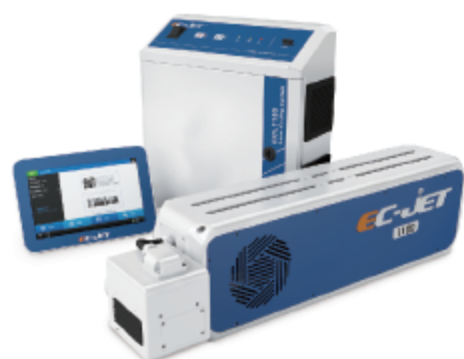


ECL1100 series CO₂

ECL6100 series Fiber

Fomone C series CO₂

Fomone F series Fiber



ECL7000T series UV

Fomone ECO series CO₂

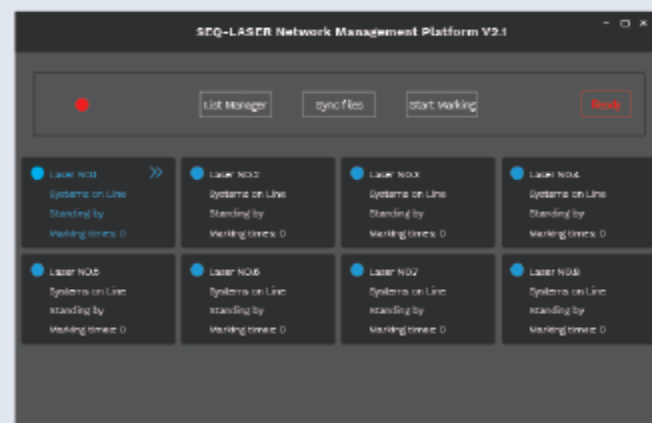
Fomone ECO series Fiber

Fomone ECO series UV



SEQ

central control system



◀ SEQ network management platform



◀ NET architecture, capable of cascading multiple devices



◀ Use ARM platform design scheme



◀ 'SEQ Net Manager' Central control software

- 7*24 hours continuous stable production without shutdown, ensuring stable production.
- Easily connect industry 4.0 scheme.
- Speeds up to 600m/min, for high-speed production demand^{*1}.
- Let the operator convenient and quick to use.
- "0" Consumables, meet the requirements of low use cost.
- Strong technology R&D capability
- Globalization services

ECL SERIES

High Speed Laser Coding Systems



Fast & Efficient



Touchable Screen



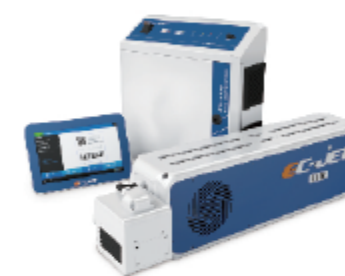
Unique System

CIJ

Laser

Hi-res

DOD



◀ ECL1100 Series CO₂

Model ^{*1}	ECL1130	ECL1140	ECL1160
Laser Power	30W	40W	60W
Laser Wave Length	10.6μm(10.2μm/9.3μm optional)		
Laser Type	Imported brand CO2 laser source		
Galvanometer	High-performance high-speed galvanometer		
Laser Head Dimension	722x190x140 (mm)		855x208x190 (mm)
Control Cabinet Dimension	410x400x150 (mm)		
Touchscreen Dimension	266x185x43 (mm)		



◀ ECL6100 Series Fiber

Model ^{*1}	ECL6120	ECL6130	ECL6150
Laser Power	20W	30W	50W
Laser Wave Length	1064nm		
Laser Type	Imported brand fiber laser source		
Galvanometer	High-performance high-speed galvanometer		
Laser Head Dimension	441x131x97 (mm)		
Control Cabinet Dimension	530x460x160 (mm)		
Touchscreen Dimension	266x185x43 (mm)		



◀ ECL7000T Series UV

Model ^{*1}	ECL7003T	ECL7005T	ECL7010T	ECL7015T
Laser Power	3W	5W	10W	15W
Laser Wave Length	355nm			
Laser Type	Imported brand UV laser source			
Galvanometer	High-performance high-speed galvanometer			
Laser Head Dimension	645x175x164 (mm)			938x225x206 (mm)
Control Cabinet Dimension	410x400x150 (mm)			
Touchscreen Dimension	266x185x43 (mm)			

FOMONE SERIES

High Quality Laser Coding Systems



High
Quality



Touchable
Screen



Unique
System

Fomone C series CO₂



Fomone F series Fiber



Type	CO ₂		Fiber		
Model ^{*1}	C300	C600	F200	F300	F500
Laser Power	30W	60W	20W	30W	50W
Laser Wave Length	10.6μm (10.2μm/9.3μm optional)		1064nm		
Laser Type	CO ₂ Laser		Fiber Laser		
Galvanometer	High-performance high-speed galvanometer				
Laser Head Dimension	697x175x140 (mm)	940x140x140 (mm)	531x131x97 (mm)		
Control Cabinet Dimension	350x345x140 (mm)		510x475x150 (mm)		
Touchscreen Dimension	266x185x43 (mm)				

^{*1} More Information, Please contact Guangzhou EC-PACK Packaging Equipment CO., Ltd.

PARAMETER

	ECL series			Fomone series	
Printer Series	ECL1100 CO ₂	ECL6100 Fiber	ECL7000T UV	CO ₂	Fiber
SEQ system software parameters					
Max Printing Characters	up to 2000 Characters Per Second			up to 1800 Characters Per Second	
Linear Speed	Depends on marking area and number of characters, up to 600m/min, (depending on material and content)			Depends on marking area and number of characters, up to 500m/min, (depending on material and content)	
Marking	Set content arbitrarily within the marking range, dot matrix and vector all-in-one machine (both dot matrix and vector)				
Minimum Line Width	0.12mm	0.001mm		0.12mm	
Repeat Positioning Accuracy	±0.001mm				
Character Height	0.6mm-Maximum marking area	0.3mm-Maximum marking area		0.6mm-Maximum marking area	0.3mm-Maximum marking area
Fonts	Over 26 type of fonts, Support customer design and multi- language				
Barcode Type	Code39/Code128/Code126/QR Code /Data Matrix etc.				
Print Content	Text, Arc Text, Graphics, Serial Number, Date, Time, File Reading Data, Shift Code, Random Code, External Data				
Text Type	BMP/DXF/PLT				
Real-time Clock	Dynamic date and time in real time				
Message Editing	Allows to create, import, export, modify				
Counter	Can display the total number of products and actual prints				
Product Detect Input	NPN/PNP(Standard working voltage 24V)				
Signal Input/Output	Condition marking/ Start up / Stop/ Interlock; System ready/ Marking/ Failure				
Communication Port	RS-232, Ethernet (100/1000Mbit)				
User Interface	Help-online, Multi-language support, Support Ethernet remote PC operation and networking				
Operation System	EC-JET "SEQ" Operation System				
Main Control	10.1 " industrial resistance touch screen				
Marking Area	Standard 110x110mm (more optional)	Standard 110x110mm (more optional)	Standard 140x140mm (more optional)	Standard 110x110mm (more optional)	Standard 110x110mm (more optional)
Focusing lens	Standard 150mm (more optional)	Standard 163mm (more optional)	Standard 210mm (more optional)	Standard 150mm (more optional)	Standard 163mm (more optional)
Cabinet Material	SUS304 Industrial-grade stainless steel and industrial-grade aluminum cabinet				
Safety Certificate	CE certification				
Cooling System	Air Cooling		Water Cooling	Air Cooling Or Water Cooling	Air Cooling
Operating Temperature	5-40℃, 10%-90%RH, non-condensing				
Protective Grade	IP55, Can reach to IP65 if required			IP55	
Power Supply	AC100-240V,50/60Hz				

FOMONE ECO SERIES

Economical Laser Coding Systems



High Quality



Touchable Screen



Economical Application

CO₂ Series



Fiber Series



UV Series



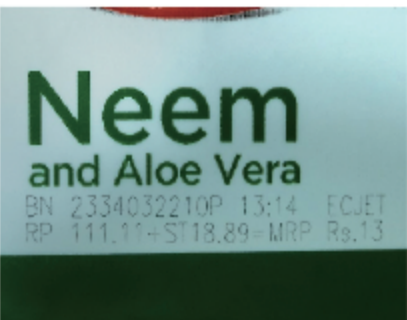
Type	CO ₂	Fiber	UV	
Model ^{*1}	C300/ECO C301/ECO C302/ECO C600/ECO C601/ECO C602/ECO	F200/ECO F300/ECO F500/ECO	U03/ECO U05/ECO	U03A/ECO U05A/ECO
Laser Source	/		FOTIA series	FIT series
Marking Type	Dot, Lineation			
Minimum Line Width	0.01mm			
Repeat Positioning Accuracy	0.01mm			
Text Type	BMP/DXF/HPGL/JPEG			
Bar code	Bar code, QR Code			
Real-time Clock	Dynamic date and time in real time			
Message Editing	Print information can be edited independently, allowing creation, editing, and calling			
Counter	The counters show the total number of passes and the total number of prints			
Communication Port	RS-232, Ethernet (100Mbit)			
Laser Head Dimension	710x177x130 (mm)	495x104x130 (mm)	560x230x200 (mm)	530.5x176x150 (mm)
Control Cabinet Dimension	564x500x296 (mm)			
Touchscreen Dimension	272x218x26 (mm)		8 inch or 10 inch	10 inch

^{*1} More information, Please contact Guangzhou EC-PACK Packaging Equipment CO., Ltd.

PARAMETER

Model	C300/ECO	C301/ECO	C302/ECO	C600/ECO	C601/ECO	C602/ECO
Laser Wave Length	10.6/10.2/9.3μm					
Laser Power	30W			60W		
Marking Head Rotation	0°- 360°					
Cabinet Material	Industrial-grade stainless steel and industrial-grade aluminum housing					
Safety Certificate	CE certification					
Main Control	Touchscreen control					
Operation System	linux					
Cooling System	Air Cooling Or Water Cooling					
Operating Temperature	5-40°C, Humidity up to 90% non-condensing					
Protective Grade	IP54					
Marking Area	Standard 110x110mm(more optional)					
Focusing lens	Standard 150mm(more optional)					
Marking lines	Random within marking area					
Linear Speed	0-300m/min (depending on the material and marking content)					
Power Supply	AC220V, 50-60Hz, 800W					

Model	F200/ECO	F300/ECO	F500/ECO	U03/ECO	U05/ECO	U03A/ECO	U05A/ECO
Laser Wave Length	1064nm			355nm			
Laser Power	20W	30W	50W	3W	5W	3W	5W
Marking Head Rotation	0°- 360°						
Cabinet Material	Industrial-grade stainless steel and industrial-grade aluminum housing						
Safety Certificate	CE certification						
Main Control	Touchscreen control						
Operation System	linux						
Cooling System	Air Cooling			Water Cooling			
Operating Temperature	5-40℃, Humidity up to 90% non-condensing						
Protective Grade	IP54						
Marking Area	Standard 110x110mm(more optional)			Standard 140x140mm(more optional)			
Focusing lens	Standard 163mm(more optional)			Standard 210mm(more optional)			
Marking lines	Random within marking area						
Linear Speed	0-300m/min (depending on the material and marking content)						
Power Supply	AC220V, 50-60Hz, 800W						



HIGH RESOLUTION INKJET PRINTER

ECH900/ECH910 High Resolution Inkjet Printer

ECH200Pro Handheld High Resolution Inkjet Printer

ECH500Pro Piezo High Resolution Inkjet Printer

ECH510Pro Piezo High Resolution Inkjet Printer



ECH900/910 SERIES

High Resolution Inkjet Printer



Stable
Performance



Simple &
Generous



Safe &
Reliable



Support Multiple Head Seamless Message Splicing Capability



Name Coding

Information Coding

Logo Coding



PRODUCT FEATURES

- By intelligent SEQ operating system, Message length is up to 20 inches and can be customized according to special requirement.
- It has a variety of optional brackets and different installation methods, which can easily match weighing machines, packaging machines, and so on.
- Saving consumable, free maintenance; Saving maintenance cost.

PARAMETER

Model	ECH900 Series	ECH910 Series
Print Height	0-50.8mm	0-101.6mm
Print Lines	Multiple Lines Within Printable Area	
Dynamic Data	Communication, Barcode/2D Barcode, Text	
Print Speed	120 m/min (150DPI)	60 m/min (150DPI)
Data Supported	Text, Time, Date, Serial number, Logo, Barcode, 2D Barcode	
Fonts Supported	Windows Font	
Message Length	20inch, Extendable	
Printer Memory	2GB	
Operation System	SEQ Operation System	
External I/O	Standard USB Host, Remote Communication, RS-232 Communication	
Environment	Temperature: 10~40°C, Humidity: 10%~80%	
EMI Compliance	EN55011:2009+A1:2010, EN61326-1:2013, EN61000-3-2:2014, EN61000-3-3:2013	
Cartridge capacity	42ml	
Printing Material	Porous or semi-porous surface materials such as wood, cardboard boxes, building materials, etc.	
Power Supply	AC110V-240V, 50/60Hz	
Power Rating	<60W	

ECH200Pro

Handheld High Resolution Inkjet Printer



Stable Performance



Lightweight & Portable



Safe & Reliable

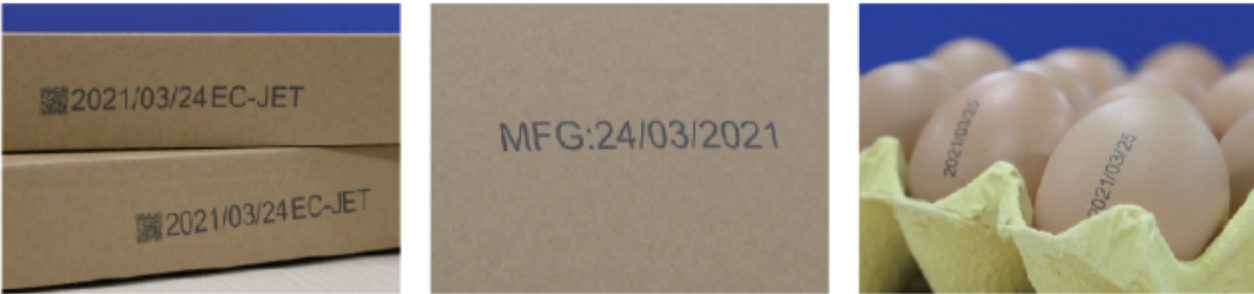
Lightweight & Portable



QR Code Coding

Information Coding

Time Coding



PRODUCT FEATURES

- Standby time up to 8 hours; Portable package, which can be brought to any place; 4 hours large-capacity battery as option under continuous working.
- By SEQ operating system, Message length is up to 20 inches and can be customized according to special requirement.
 - Saving consumable, free maintenance ; Saving maintenance cost.

PARAMETER

Model	ECH200Pro
Print Height	0-12.7mm
Print Lines	Multiple Lines Within Printable Area
Dynamic Data	Barcode, 2D Barcode, Text
Print Resolution	150*300DPI~300*1500DPI
Standby Time	8 hours
Data Supported	Text, Time, Date, Serial number, Logo, Barcode, 2D Barcode
Fonts Supported	Windows Font
Message Length	20inch, Extendable
Printer Memory	2GB
SEQ Operation System	SEQ Operation System
External I/O	Standard USB Host
Environment Temp	0°C~50°C
EMI Compliance	EN55011:2009+A1:2010,EN61326-1:2013,EN61000-3-2:2014,EN61000-3-3:2013
Cartridge capacity	42ml
Printing Material	Porous or semi-porous surface materials such as wood, cardboard boxes, building materials, etc.
Power Supply	AC110V-240V,50/60Hz
Power Rating	<30W

ECH500Pro

Piezo High Resolution Inkjet Printer



Stable Performance



Simple & Generous



Safe & Reliable



intelligent touch screen, better user experience

Logo Coding

Specification Parameter Coding

Barcode Coding



PRODUCT FEATURES

- Multiple options of ink types, suitable for different printing requirement.
- Resolutions up to 180 DPI, which is for printing high quality coding and marking information on a variety of packaging material without infiltration or fading.

PARAMETER

Model	ECH500Pro
Print Height	71.8mm
Print Distance	Less than 5mm
Print Lines	Multiple Lines Within Printable Area
Print Speed	60m/min @180x180DPI
Maximum Resolution	180x900DPI
Data Supported	Text, Time, Date, Serial number, Logo, Barcode, 2D Barcode
Message Length	700mm, Extendable
Storage	Unlimited
Ink Type	Oil ink、UV cured ink
Ink supply mode	Siphon mode
Ink Drop Size	35PL、50PL
Nozzle Heating Type	Built-in Type Heating
Cleaning Mode	Cleaning by button , ink recyclable
Cabinet Material	Stainless Steel, Aluminum Alloy
Supported Function	Remote Communication, Dynamic Data, Remote Control
Operating System	SEQ Operation System
External Interface	USB Host, Ethernet Port, External Alarm, Photocell
Working Temperature	-5℃~45℃
Power Supply	AC110V-240V, 50/60Hz
Power Rating	< 60W

ECH510Pro^{*1}

Piezo High Resolution Inkjet Printer



Stable
Performance



Simple &
Generous

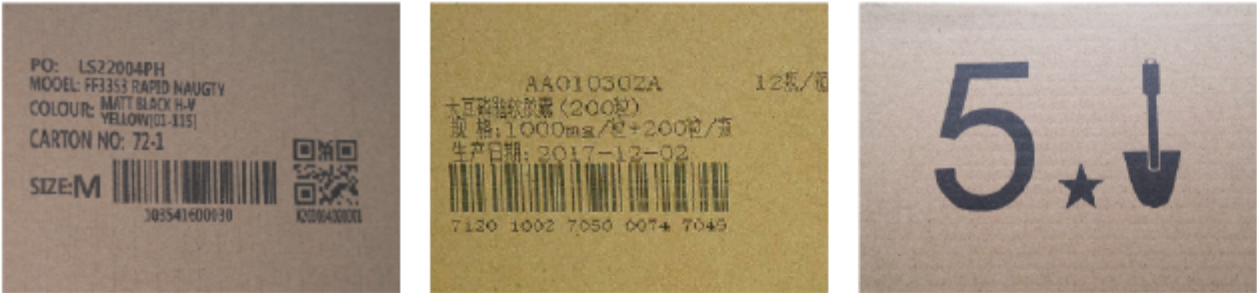


Safe &
Reliable

intelligent touch screen, better user experience



2D code Coding Specification Parameter Coding Graphic coding



PRODUCT FEATURES

- Support various brand of print head.
- Multiple options of ink types, suitable for different printing requirement.
- ECH510Pro is a High Resolution Inkjet printer (LCM), which is for printing high quality coding and marking information on a variety of packaging material without infiltration or fading.

PARAMETER

Model	ECH510Pro	
Print head brand	SEIKO	RICOH
Print Height	71.8mm	50mm
Print Distance	Less than 5mm	Less than 3mm
Print Lines	Multiple Lines Within Printable Area	
Print Speed	60m/min	up to 180m/min
Maximum Resolution	180DPI	1200DPI
Data Supported	Text, Time, Date, Serial number, Logo, Barcode, 2D Barcode	
Message Length	700mm, Extendable	
Storage	Unlimited	
Ink Type	Oil ink, UV cured ink	
Ink Drop Size	35PL, 50PL	7-35PL
Ink Supply mode	Negative pressure	
Nozzle Heating Type	Built-in Type Heating	
Cleaning Mode	Auto-cleaning, ink recyclable	
Cabinet Material	Stainless Steel, Aluminum Alloy	
Supported Function	Remote Communication, Dynamic Data, Remote Control	
Operating System	SEQ Operation System	
External Interface	USB Host, Ethernet Port, External Alarm, Photocell	
Working Temperature	-5°C~45°C	
Power Supply	AC110V-240V, 50/60Hz	
Power Rating	< 60W	

LARGE CHARACTER INKJET PRINTER

ECD100 Series/ECD200 Series
Large character inkjet printer



Double trigger design, multiple printing tasks processing simultaneously



PARAMETER

Model	ECD100 Series/ECD200 Series
Print Head Type	7 dots, 16 dots
Print Lines	Up to 4 Lines (7x5 matrix characters)
Print Head Quantity	Up to 2 Print Heads (16 dots)
Print Height	17mm-64mm
Print Distance	5mm
Print Speed	80m/min
Print Direction	Horizontal or Vertical

Print Function

Time (Accurate to Seconds)	Up to 32 Bit Serial Number
Date (Any Combination Format)	Graphic
External Communication, Remote Control Function	Chinese pinyin input method
Available Two Different Production Lines Printing Simultaneously	Intelligent Picture Converting Available

Memory capacity

Up to 200 messages Storage	Up to 1600 7x5 Characters Each Message
7,9,12,16 Dots English Character and Digits	
Upgrade Special Characters According to Customer's Request	
Program 32*2048 Any Graphic Dot Matrix	Communicate With PC to Change Printing Text

Standard port

Photocell / Encoder Port	USB Port
To External Alarm Port	RS-232 Communication Port

Physical properties

Industrial-grade Stainless Steel	
Installation Method	Desktop
Pump-type Continuous Ink Supply, Free of External Air Source	
Operating Temperature	5°C-45°C
Power Supply	AC100V-240V, 50/60Hz
Protection Grade	IP44
Power	150W

INKJET PRINTER CONSUMABLES



Continuous Inkjet Printer Consumables



ECH900 High Resolution
Inkjet Printer Consumables



ECH 500Pro Piezo High Resolution
Inkjet Printer Consumables



INTEGRATOR EQUIPMENT



Conveyor



Feeder



Sealing machine



Rewinding machine



Bag feeder



Pillow type packaging machine



Filling machine



Labeling machine



Vertical packaging machine



Stretch film machine



Cartoning machine



Weighing machine



X Series Liquid Level
Inspection Machine



P series Pressure Sealing
Inspection Machine



HC Series Vacuum
Inspection Machine



COOPERATIVE PARTNER

There are more than 120 overseas sales service outlets and more than 50 domestic sales outlets

- | | | | |
|-------------|------------|-----------|-------------|
| UK | Denmark | Germany | Italy |
| Egypt | Iran | Pakistan | Russia |
| India | Bangladesh | Thailand | Indonesia |
| Philippines | Malaysia | Singapore | Brazil |
| Australia | Canada | America | Kuwait |
| Jordan | Uzbekistan | Lebanon | Afghanistan |
| Israel | Finland | Cambodia | Netherlands |
| Myanmar | Kazakhstan | Iraq | |

- | | | | |
|-------------|------------|----------------|--------------------|
| Sudan | Belgium | Spain | Portuguese |
| Algeria | Morocco | South Africa | Mexico |
| Angola | Argentina | Venezuela | Ethiopia |
| Tanzania | Kenya | Zambia | Ecuador |
| New Zealand | Tunisia | State of Qatar | Peru |
| Turkey | Nepal | Yemen | Columbia |
| Vietnam | Tajikistan | Saudi Arabia | Paraguay |
| Mongolia | Sri Lanka | France | And so on, More... |

APPLICATION



No particular order in above brands