



# PHARMAPACK

◆ EC-JET Coding Systems



# EC-Pack Profile



## Our Journey

- 2004 EC-PACK Asia Co., Ltd., was founded in Hongkong and set up its factory in Guangzhou with brand name of EC-JET. EC-JET is dedicated to supply cost effective and high quality Coding system to Clients.
- 2006 The first EC-JET300 ink-jet printer was successfully developed and sold in China and we took part in SINO-PACK exhibitions.
- 2007 The first EC-JET Micro ink-jet printer and EC-JET 400 pigment ink-jet printer was successfully developed and sold in China.
- 2009 The first two-color continuous ink-jet(CIJ) printer in the world was successfully developed ,creating a new opportunity for CIJ in the field of anti-counterfeit.  
EC-JET laser printer was developed and exhibited in German AICHEMA exhibition. The 1000th printer was delivered to Client.
- 2010 The first color anti-counterfeiting small character inkjet printer delivered to customers . We successfully participated in ALL-PACK indonesia and annual-sales qty is up to 1000 sets.
- 2011 The world first dual-head continuous ink-jet printer and first Twin-Jet continuous ink-jet printer was successfully developed and used by customers. In the same year, EC-JET participated in the German INTERPACK exhibition and set the national standard for "continuous ink-jet printer" in Asia.
- 2012 EC-JET becomes a wholly owned subsidiary of Phamapack Technologies Corporation. EC-PACK Asia Co., Ltd change the name to Guangzhou EC-PACK Packaging Equipment Co.,Ltd in the same year.
- 2013 DOD ink-jet printers which produce large characters was put into production.
- 2016 EC-JET along with Phamapack to be a list company together.

## Product ranges

Guangzhou EC-PACK Packing Equipment Co.,Ltd (brand name EC-JET) focuses on R&D and production of coding and marking systems. Its products include Continuous Ink-jet printers(CIJ), Laser coding system, Large Character Ink-Jet Printer ( DOD ) , High-resolution printer(TIJ),Thermal Transfer printer ( TTO ) , and related industrial printing consumables and spare parts. Our printers are widely applicable to pharmaceutical, cosmetic, personal care, and food industries.

## Technology

EC-JET is the leading enterprise in the Pacific coding industry. It has set the standards in the "continuous ink-jet printing technology." It holds numerous patented technologies and has been recognized by the National Assembly of Technology with several grants for its contribution to scientific research and innovative advancements of ink-jet printing technology. The EC-JET 920, based on the continuous ink-jet (CIJ) two-color anti-counterfeit technology, is currently the accepted standards worldwide. EC-JET is proud of its achievements and pioneered technologies in the field of printing. The company is committed to the research of new and innovative ideas.

## Quality Assurance and Service

EC-JET products are certified and approved by many regulatory organizations: CE, UL, CSA, ROHS, and FDA. EC-JET is committed to 360° customer service concept ,providing service for pre-sales consultation, turn-key solutions, integration and installation testing, training, follow-up services, on-line service support and on-site service in 24 hours a day / 7 days a week.

## Marketing and Service Network

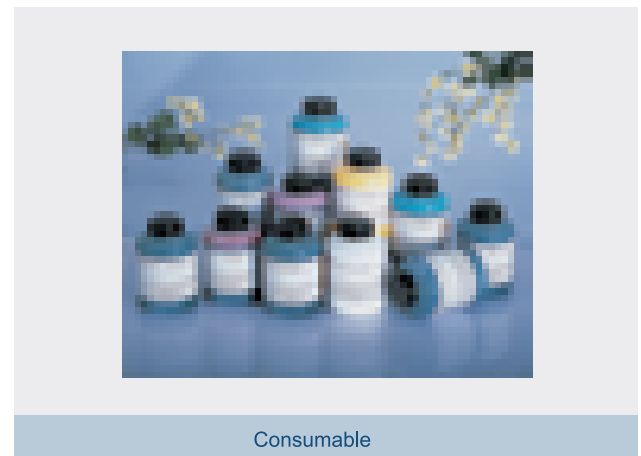
EC-JET has a well-established sales and services network throughout Asia with more than 30 sales and support offices to serve its customers. The company is actively developing the global markets with sales and service partnerships in over 25 countries to ensure comprehensive service for our global customers. EC-JET products are widely adopted in many industries. Many of our customers have operations worldwide. They include P&G, SAMSUNG, LG, Gree, NEW HOPE GROUP, Schick Asia Operations, Tongrentang (TRT), and Avon.

## Our Vision

"Change Begins with Innovation" ,which EC-JET has adopted the concept of continuous improvement. We are actively integrating resources to leverage our strength and improving our processes to widen our product range. EC-JET is committed to its customers. It aims to become the leader in the packaging industry by supplying high quality and cost-effective coding equipment.

# Excellent EC-JET, Intelligent Choice

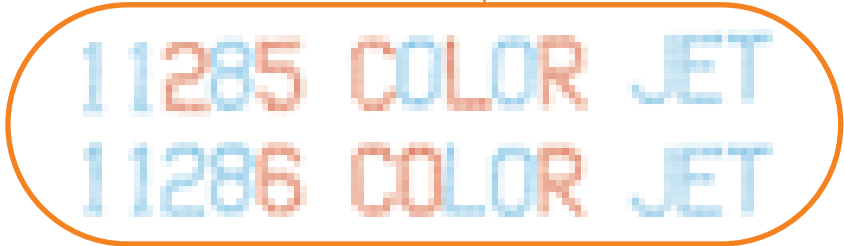
Six series of products:



# Continuous Ink-Jet Printer

## EC-JET920

Two-Color & Anti-Counterfeiting Ink-Jet Printer



## Global First

The first two-color anti-counterfeiting continuous ink-jet printer



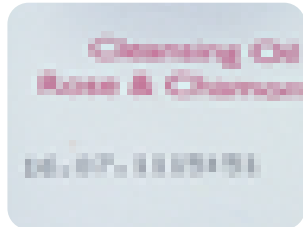
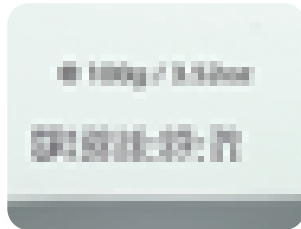
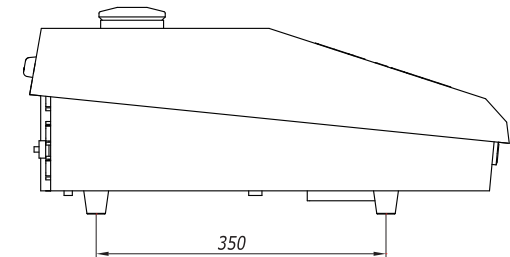
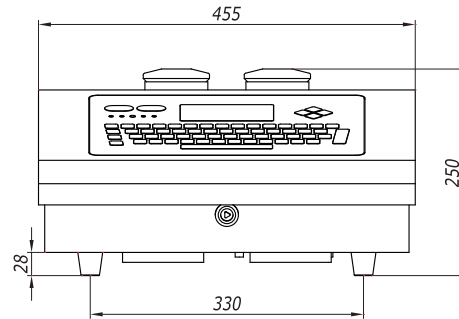
- ▶ Applicable to any two-color printing. (except the white pigment ink)
- ▶ Variety of color combinations of anti-counterfeiting printing available.
- ▶ Can be identified by the security authentication process to avoid fake products.
- ▶ Applicable to all ink except the pigment ink

Detailed parameters	
Print head type	60u
Print height	Up to 34 dot
Print line	1 to 4 line
Max. Message capability ※	Up to 1055 characters
Max. Speed Single line (ideal pitch 0.7mm)	6.25 m/s
Max. Printing characters per second ※	Up to 2286 character
Cabinet dimensions (L×W×H)	486 mm x 354 mm x 865 mm
Print head dimension	60 mm x 60 mm x 170 mm
Weight	40 kg

※ based on 7 dot English character

# EC-JET500

## Continuous Ink-Jet Printer



Models	EC520N	EC520H	EC530N	EC530H	EC540N	EC540H
Specifications	Two lines standard	Two lines high speed	Three lines standard	Three lines high speed	Four lines standard	Four lines high speed

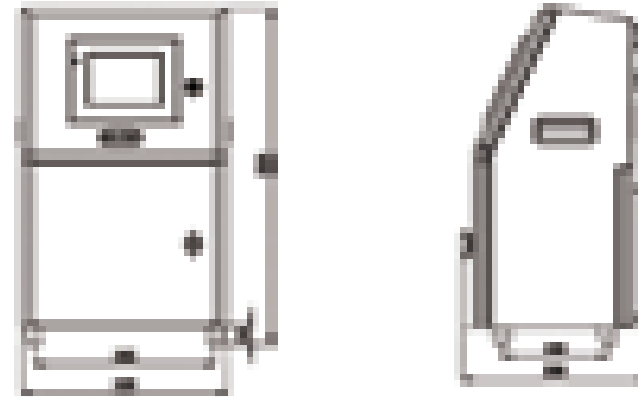
Detailed parameters	
Print head type	50u \ 60u \ 70u
Print height	Up to 34 dot
Print line	1 to 4 line
Max. Message capability ※	Up to 1055 characters
Max. Speed Single line(ideal pitch 0.7mm)	6.25 m/s
Max. Printing character per second ※	Up to 2286 character
Cabinet dimensions (L×W×H)	585 mm x 455 mm x 250 mm
Print head dimension	Φ 42 mm x 188 mm
Weight	23 kg

🔗 Applicable to all ink except the pigment ink

※ based on 7 dot English character

# EC-JET1000

## Continuous Ink-Jet Printer



Models	EC1010P	EC1020N	EC1030N
--------	---------	---------	---------



USB data transmission



Touch screen operation

Applicable to all ink except the pigment ink

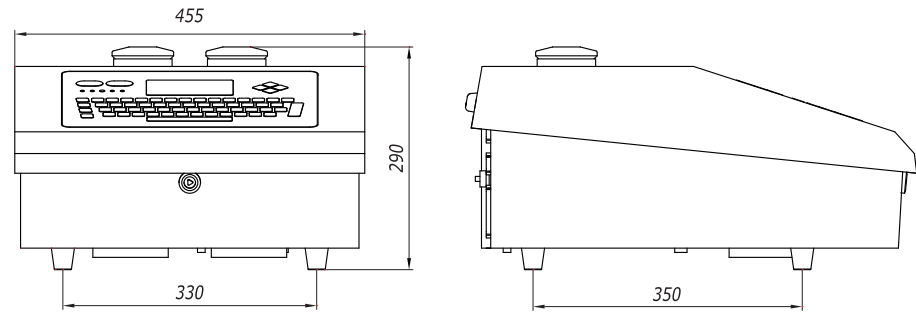
Detailed parameters	
Print head type	60u
Print height	Up to 24 dot
Print line	1 to 3 line
Max. Message capability ※	Up to 2048 characters
Max. Speed ※	2 m/s
Max. Printing character per second ※	Up to 1482 character
Cabinet dimensions (L×W×H)	290mmx325mmx528mm
Print head dimension	Φ 42 mm x 188 mm
Weight	18.3kg

※ based on 7 dot English character

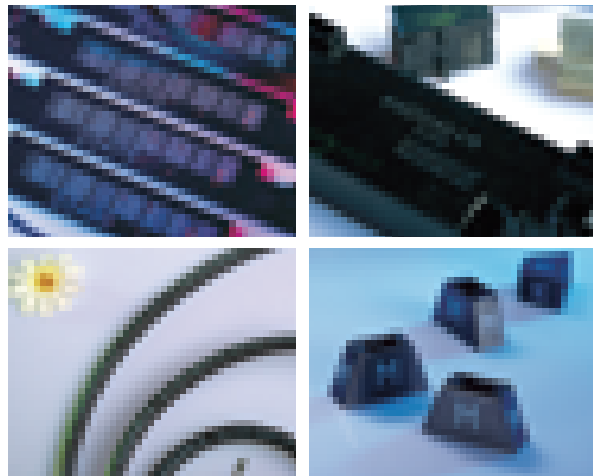
Please consult our sales representative for non-standard designs. All information included in this catalog is subject to change without priority notice.

# EC-JET400

## Continuous Ink-Jet White Pigment Printer



- Smart blending application ensures the pigment ink remains as a constant and stable suspension while reducing sedimentation (only applicable to the pigment ink printer).
- Dedicated software for measuring field length.



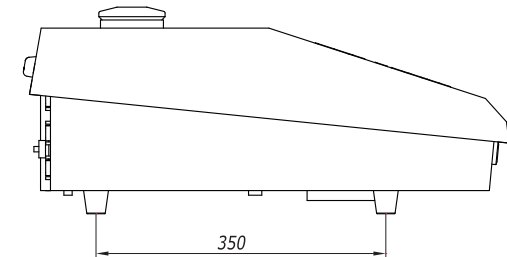
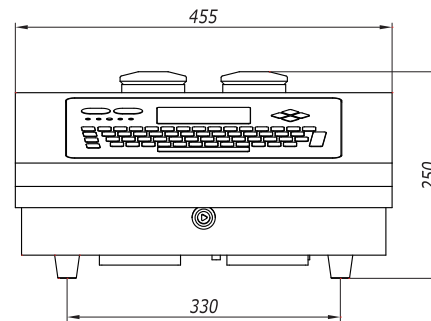
Models	EC420N	EC420H	EC430N	EC430H	EC440N	EC440H
Specifications	Two lines standard	Two lines high speed	Three lines standard	Three lines high speed	Four lines standard	Four lines high speed

Detailed parameters	
Print head type	70u
Print height	Up to 34 dot
Print line	1 to 4 line
Max. Message capability ※	Up to 1055 characters
Max. Speed Single line(ideal pitch 0.7mm)	6.25 m/s
Max. Printing characters per second ※	Up to 1482 characters
Cabinet dimensions (L×W×H)	585mm×455mm×290mm
Print head dimension	Φ 42 mm ×188 mm
Weight	23 kg

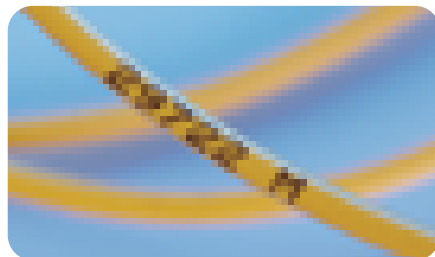
※ based on 7 dot English character

# EC-JET500

## Continuous Ink-Jet Micro Printer



Applicable to all ink except the pigment ink



### Detailed parameters

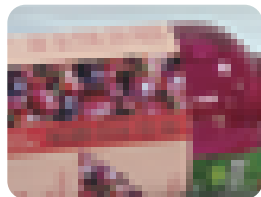
Print head type	40u
Print height	Up to 34 dot
Print line	1 to 4 line
Max. Message capability ※	Up to 1055 characters
Max. Speed ※	1.4 m/s
Min.Print height	0.9 mm
Max.Print height	5 mm
Max. Printing character per second ※	Up to 2857 character
Cabinet dimensions (L×W×H)	545 mm x 447 mm x 265 mm
Print head dimension	Φ 42 mm x 188 mm
Weight	23 kg

※ based on 7 dot English character



# EC-JET910

## Dual-Head Continuous Ink-Jet Printer



# EC-JET

TEL: +86-20-82209518  
FAX: +86-20-82209511  
2013/09/13 10:43  
WWW.EC-JET.COM 70U



- ▶ Unique twin system
  - ◇ Ink consumption according to demand
  - ◇ Single or double ink system printing setting available
- ▶ Applicable to all ink except the pigment ink

Detailed parameters	
Print head type	40u \ 50u \ 60u \ 70u
Print height	34 dot per nozzle (up to 68 dot in total)
Print line	1 to 4 line / print head
Max. Message capability ※	Up to 1055 characters
Min. Print height	0.9 mm/nozzle
Max. Print height ※	15 mm/nozzle
Max. Printing character per second ※	Up to 2857 characters
Cabinet dimensions (L×W×H)	486 mm × 354 mm × 865 mm
Print head dimension	Φ 42 mm × 188 mm
Weight	40 kg

※ based on 7 dot English character

# EC-JET930

## Twin-Jet Continuous Ink-Jet Printer



- Unique twin system
  - ◇ Ink consumption according to demand
  - ◇ With dedicated software for ultra high speed or multi-line printing (according to demand)
- Applicable to all ink except the pigment ink

Detailed parameters	
Print head type	50u \ 60u \ 70u
Print height	34dot per nozzle (up to 68 dot in total)
Print line	1-8 line
Max. Message capability ※	Up to 1055 characters
Min.Print height	0.9 mm/nozzle
Max.Print height	15 mm/nozzle
Max. Printing character per second ※	Up to 2857 characters
Cabinet dimensions (L×W×H)	486 mm×354mm×865mm
Weight	40 kg

※ based on 7 dot English character

# Technical Specifications

## Features

· Single button to start and shutdown	· Automatic print head and ink route flush
· Menu driven message and editing	· Multi-lingual operation interface
· Standard QWERTY keyboard	· Status indicator light
· WYS / SYG messages displaying screen	· Self-diagnostic
· Wide-screen display	· Multi-Password protection
· Adjustable brightness backlit LCD	· Meter indicator
· Ink / solvent refill protection system to prevent filling the wrong ink / solvent	· Logo editor

## Physical Specifications

· Print head conduit: 2 meter ( 3 meter optional )	
· Industrial grade stainless steel cabinet	
· Titanium cover ( optional )	
· Dustproof and waterproof grade	IP55
· Installation	Desktop
· Operation temperature	5-45°C
· Humidity range ( no condensation )	10-90%
· Power supply	AC 100-240V, 50/60Hz
· Power	100W

## Printing

· Fixed and variable text / capital and normal characters	· Batch coding
· Character boldness enlargement ( up to 9x )	· Serial number with hexadecimal counting
· Adjustable character height, width and delays	· Reverse printing
· Flexible date and time formats ( optional automatic updating )	· Production batch counting
· Real time printing with accuracy to the seconds	· Pinyin and phonetic notation input available for Asian language
· Barcode and 2D code printing	· Message / Logo creating software ( optional )
· Dedicated software ( optional )	· Remote communication

## Memory Capacity

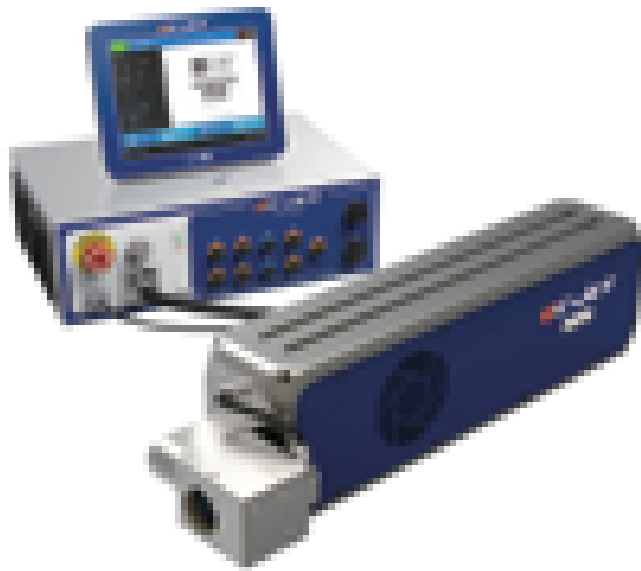
· Message storage capacity	
Standard storage capacity	Up to 46 pieces
Extendable storage capacity	SD card support ( optional )
· Programmable PROM Logo storage capacity	Up to 120 storage space
· Supporting characters for 7, 9, 12, 16, 24, and 32 dot matrix	Up to 12,000 characters

## Standard Port

· Encoder port	· Product detector port
· Alarm output port	· RS-232 port

- ◆ Options: Alarm set, print head positive gas pressure, bevel print head cover, magnetic protection print head cover, cabinet, print head console and other options are available ( please ask your representatives ).

# Laser coding system

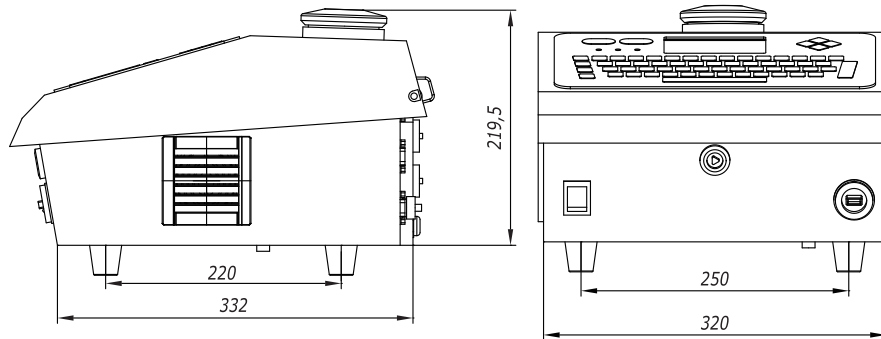


- ▶ Modular design
- ▶ "SEQ" professional high-speed printing software embedded systems
- ▶ 10.4 inches IPS color touch screen

Parameters						
Model	ECL1010	ECL1030	ECL1060	ECL6010	ECL6020	ECL6050
Laser type	CO <sub>2</sub>			Fiber		
Coding type	Dynamic coding/static coding					
Laser power	10W	30W	60W	10W	20W	50W
Cooling system	Air cooling			—		
Coding line	As request within the marking area					
Character height	0.8mm–300mm					
Barcode	A variety of 1 d and 2 d barcode type					
Graphics format	BMP/DXF/HPG/JPEGa variety of graphics format					
Text type	Fixed text , serial number, date, time, shift code, database random code					
Coding range	From 70mm to 300mm					
Interface	10.4 –inch WYSIWYG high precision industrial touch screen					
Operating system	EC–JET 'SEQ' operating system					
Standard port	encoder port, product detector port, external alarm port, Standard USB port, Ethernet port, RS232 port					
Appearance	Industrial–grade stainless steel casing and industrial–grade aluminium shell					
Controller installation	Portable or desktop					
Operating temperature	5~40℃					
Relative humidity (no condensation)	10~90%					
Protection grade	IP55					
Power supply	100~240V AC50/60Hz					
Optional	<ul style="list-style-type: none"> <li>• The red light orientation and simulation printing</li> <li>• EC – JET 'SEQ' central control software</li> <li>• USB data backup storage software</li> <li>• Smoke extractor purifier</li> <li>• Laser shield</li> <li>• IP68 protection</li> </ul>					

▶ The production line speed and scan speed depend on the product material and texts.

# Large Character Ink-Jet Printer ( DOD )



## Detailed parameters

### Memory capacity

Memory storage up to 200 pieces	Up to 1600 characters per storage ※
12dot, 16dot matrix of characters	Up to 2400 characters
Support 7, 9, 12, and 16 dot English character and digits	
Upgrade special characters according to customer' s request	
32 X 2048 graphic dot matrix and communicate with PC to change printing text are available	

### Standard port

Photocell / port interface	USB
Interface to external alarm	RS-232

### Physical features

Industrial-grade stainless steel	
Installation	Desktop
Continuous ink supplying, free of external air source	
Operating temperature	5-45°C
Power supply	AC 100-240V 50/60Hz
Power	150W

### Parameters

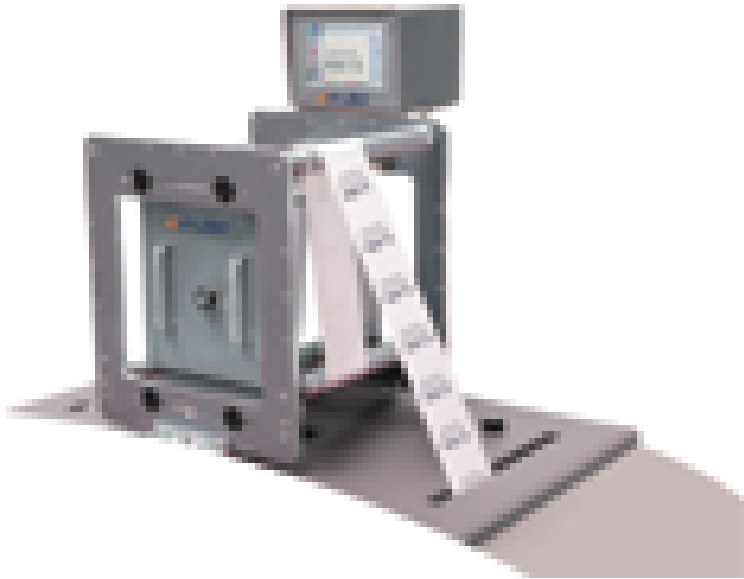
Print lines	4 lines ※
Print head quantity	up to 2 print head ( 16 dot )
Print height	12 mm - 64mm ( 16dots print head )
Print distance	5 mm
Print speed	100 m/min
Print direction	horizontal and vertical

### Printing functions

Time ( accurate to the seconds )
Date ( any combination format )
External communication and remote control function
Capable of printing on two different production lines simultaneously
Up to 32 bit serial number
Logo / graphic
Intelligent graphic conversion available

※ based on 7 dot English character

# Thermal Transfer printer ( TTO )



## Printing functions

◇Real time and date printing	◇Free time and date format setting
◇Graphic print	◇Graphic self-correcting available
◇ Batch/shift printing	◇ Variable barcode print (including 2D code)
◇TrueType font available	◇ Serial number
◇RS232 connect to printer to print message	◇9 different languages available
◇Character reversal functions (90°C/180°C/270°C)	

Models	ECT53C	ECT53I	ECT32C	ECT32I
Specifications	Continuous	Intermittent	Continuous	Intermittent

## Detailed parameters

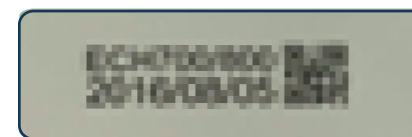
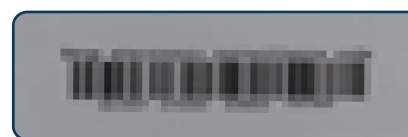
Resolution	300 DPI
Print speed	Up to 650 mm/s
Ribbon	35mm Length up to 650mm, Max. width up to 60mm, Min.width is 35mm
Ribbon save mode	Ribbon auto-rewind , ribbon saving up to 40%



# High Resolution Printer



Models	ECH700	ECH802	ECH802A
	ECH700A	ECH803	ECH803A
		ECH804	ECH804A

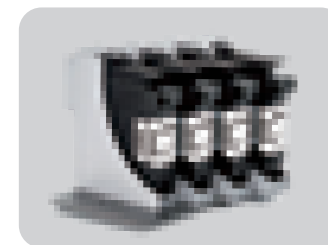


## Detailed parameters

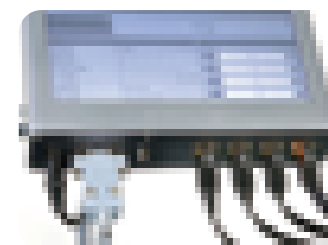
Model	ECH700	ECH700A	ECH800	ECH800A
Print Height	Single head-max.12.7mm		Up to 4 printheads-max.50.8mm	
Lines of Print Supported	Within printable Area			
Dynamic Data		Remote Communication, barcode/2D Code,Database		Remote Communication, barcode/2D Code,Database
<b>Printer Features</b>				
Print Speed	160m/min(150DPI)			
Data Supported	Text,Time,Date,Sequential Number,Logo,linear barcode,2D barcode			
Fonts Supported	Windows font,TrueType font,Logo(BMP/PNG/JPEG),Barcode,2D barcode			
Message Length	20inch.Extendable			
Printer Memory	2GB			
OS	Proprietary			
External I/O		USB Host, Remote COM		USB Host, Remote COM
<b>Physical features</b>				
Environment	Temp.:10-40°C, Humidity:10-80%			
EMI Compliance	EN55011:2009+A1:2010 EN61326-1:2013, EN61000-3-2:2014, EN61000-3-3:2013			
Cartridge lifetime	Up to 1.5 billion dots (42ml ink cartridges), about 38.5 million 12.7 mm characters			
Printing Material	Porous, Semi Porous, and Non Porous surface.			
Power Supply	110V-240VAC,50/60Hz			
Power Rating	<60w			

\*Maximum print speed subjected to print resolution.

\*\*Please consult EC-jet for more information



▲ Multi-Printhead and cartridge integration design



▲ PC and smart device (mobile and Pad) touch screen

▲ Up to 4 printheads Remote control

# Consumable



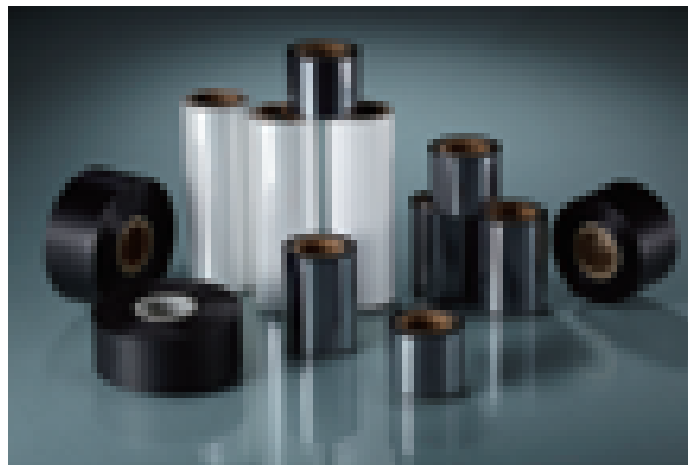
Ink-jet printer ink and solvent

## COMPONENTS

Pigment, resin, solvent and additive



High resolution cartridges



ribbon

▶ More printing information can be enquiry to Guangzhou EC-PACK Packaging Equipment Co., Ltd



# Industries Application



No particular order in above brands.

## OTHER PRODUCTS SERIES

Bottle Packaging Lines

Labelers

Secondary Packaging Lines

Optical Inspecting Equipment



## Guangzhou EC-PACK Packaging Equipment.CO.,Ltd

Address: No.16 Huang Qi Shan Road,Yong He Economic Zone,GETDD,Guangzhou,China.  
Post Code: 511356  
Tel: (86 20)8220 9518  
Fax: (86 20)8220 9511  
<http://www.ec-jet.com>  
E-mail:market@ec-jet.com

## ◆ PharmaPack Technologies Corporation

Address: No.16 Huang Qi Shan Road,Yong He Economic Zone,GETDD,Guangzhou,China.  
Post Code: 511356  
Tel: (86 20) 8221 5907  
Fax: (86 20) 8221 3367  
<http://www.pppharmapack.com>  
E-mail: market@pppharmapack.com

## ◆ PharmaPack North America

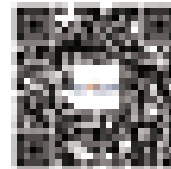
Address: 5095 East Airport Drive, Ontario, CA 91761, USA  
Tel: +1 909 390 1888  
Fax: +1 909 390 5388  
<http://www.pppharmapack.com>  
E-mail: sales@pharmapack-USNA.com

## ◆ PharmaPack Europe

Address: Via Molino Rosso 10F, 40026 Imola (BO) , Italy  
Tel: +39 0542 1890315  
Fax: +39 0542 1890314  
<http://www.pppharmapack.com>  
E-mail: market@pppharmapack.com

## ◆ PharmaPack Packaging Equipment Co. India Pvt. Ltd.

206,2nd Floor Srinivasa Tower,  
Adjacent Hotel ITC Kakatiya ,  
Hyderabad -500016,Telangana,  
India  
Ph No.+91 4032599952



Sweep



Sales Hotline:  
**400-9020-866**



Laser department hot line:  
**400-9020-566**